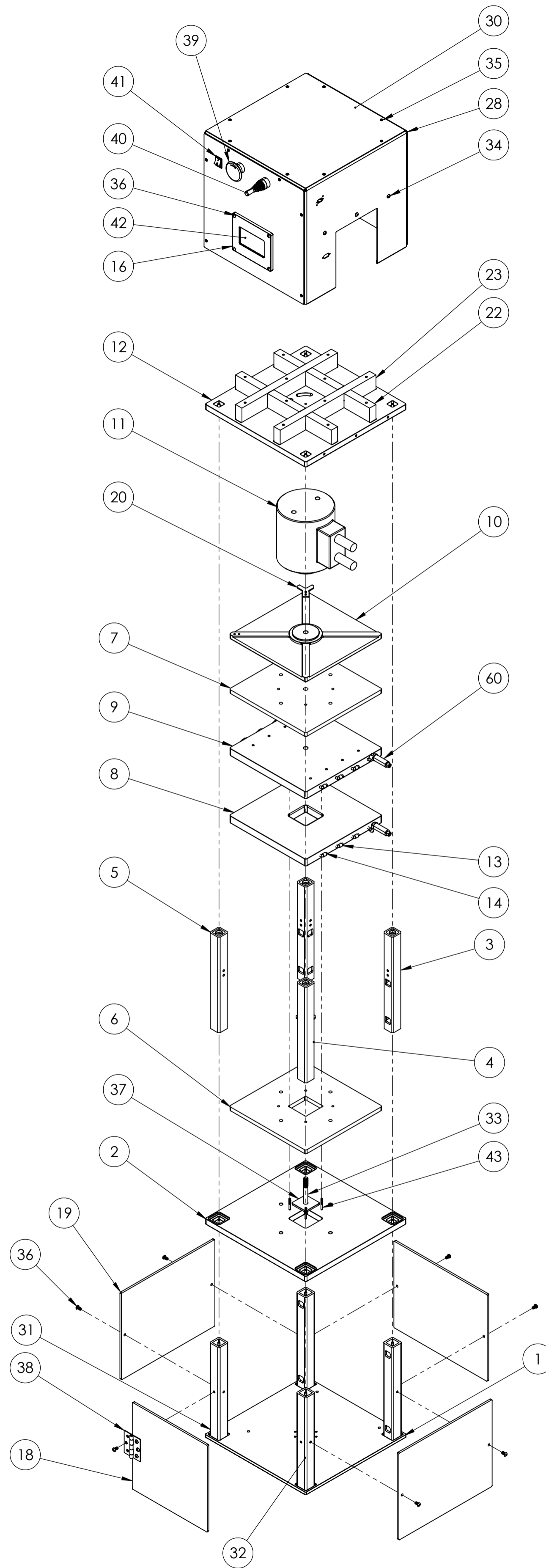
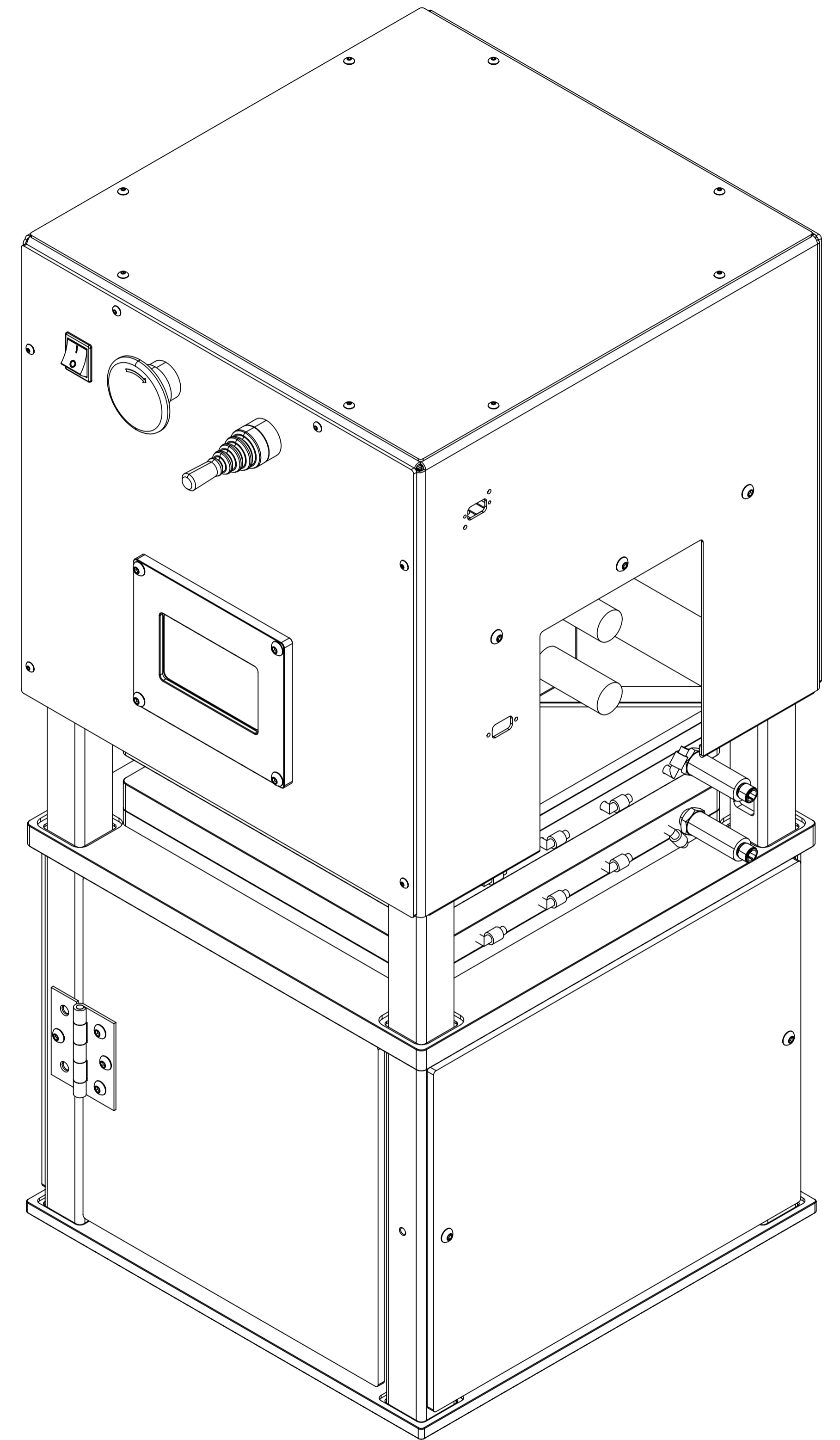


ITEM NO.	PART NUMBER	DESCRIPTION	QTY.
1	part_btm_plate_kwad	ASTM A36 Steel	1
2	part_mid_plate_kwad	ASTM A36 Steel	1
3	part_steel_hex_tube	ASTM A36 Steel	2
4	part_steel_hex_tube_R	ASTM A36 Steel	1
5	part_steel_hex_tube_L	ASTM A36 Steel	1
6	part_btm_phenolic_plate_sqr_kwad	Phenolic sheet 0.5in	1
7	part_top_phenolic_plate_sqr_kwad	Phenolic sheet 0.5in	1
8	part_KWAD_btm_sqr_heatplate	Aluminum 6061 T651	1
9	part_KWAD_top_sqr_heatplate	Aluminum 6061 T651	1
10	part_guide_plate_kwad	ASTM A36 Steel	1
11	part_cylinder	Hydraulic 100 ton cylinder	1
12	part_top_plate_kwad	ASTM A36 Steel	1
13	part_heater	Electric heater	8
14	part_heater	Electric heater	8
16	part_S3_panel_cover	Aluminum 6061 T651	1
17	part_topsec_mount_plate	Aluminum 6061 T651	1
18	part_btm_plex_front_c2	Acrylic sheet 1/4in	1
19	part_btm_plex_LRB_c2	Acrylic sheet 1/4in	3
20	part_SM_mount_alignment	CRS 1008 sheetmetal	1
21	part_SM_mount_proxsensor	CRS 1008 sheetmetal	1
22	part_reinforce_bar_15in_horz	CRS 1008 Steel	2
23	part_reinforce_bar_15in_vert	CRS 1008 Steel	2
24	part_SM_kwad_elecbox_LTR_c3	Sheetmetal CR1008 frame	1
25	94674A520	Flush-Mount Press-Fit Nut for Sheet Metal	20
26	part_kwad_sheetmetal_box_front_c4	Sheetmetal CR1008 front panel	1
27	95185A200	Zinc-Plated Steel Press-Fit Nut for Sheet Metal	4
28	part_kwad_sheetmetal_box_back_c4	Sheetmetal CR1008 back panel	1
29	95185A190	Zinc-Plated Steel Press-Fit Nut for Sheet Metal	2
30	part_SM_kwad_elecbox_Top_c3	Sheetmetal CR1008 top panel	1
31	part_steeltube_btm_FLBR	A36 steel tubes	2
32	part_steeltube_btm_FRBL	A36 steel tubes	2
33	97050A182	Alloy Steel Low-Profile Socket Head Screw	1
34	91255A533	Button Head Hex Drive Screw	6
35	91255A190	Button Head Hex Drive Screw	20
36	91255A537	Button Head Hex Drive Screw	18
37	part_KWADnipple_V9	Aluminum 6061 T651	1
38	1798A21_Surface-Mount Hinge with Holes	Surface-Mount Hinge with Holes	1
39	emer_stop_GCX1136	Emergency stop	1
40	toggle_switch_ECX1510	Toggle switch	1
41	rocker_switch_digikey_c2	Rocekt switch	1
42	kinco_hmi	HMI panel	1
43	97042A152	18-8 Stainless Steel Threaded on One End Stud	4
60	XTP25N-030-0300F (rendered)	Temperature sensor	2



**ISOMETRIC VIEW (Scale1:9)
(EXPLODED ASSEMBLY)**

**ISOMETRIC VIEW - Assembled Product
(Scale 1:3)**

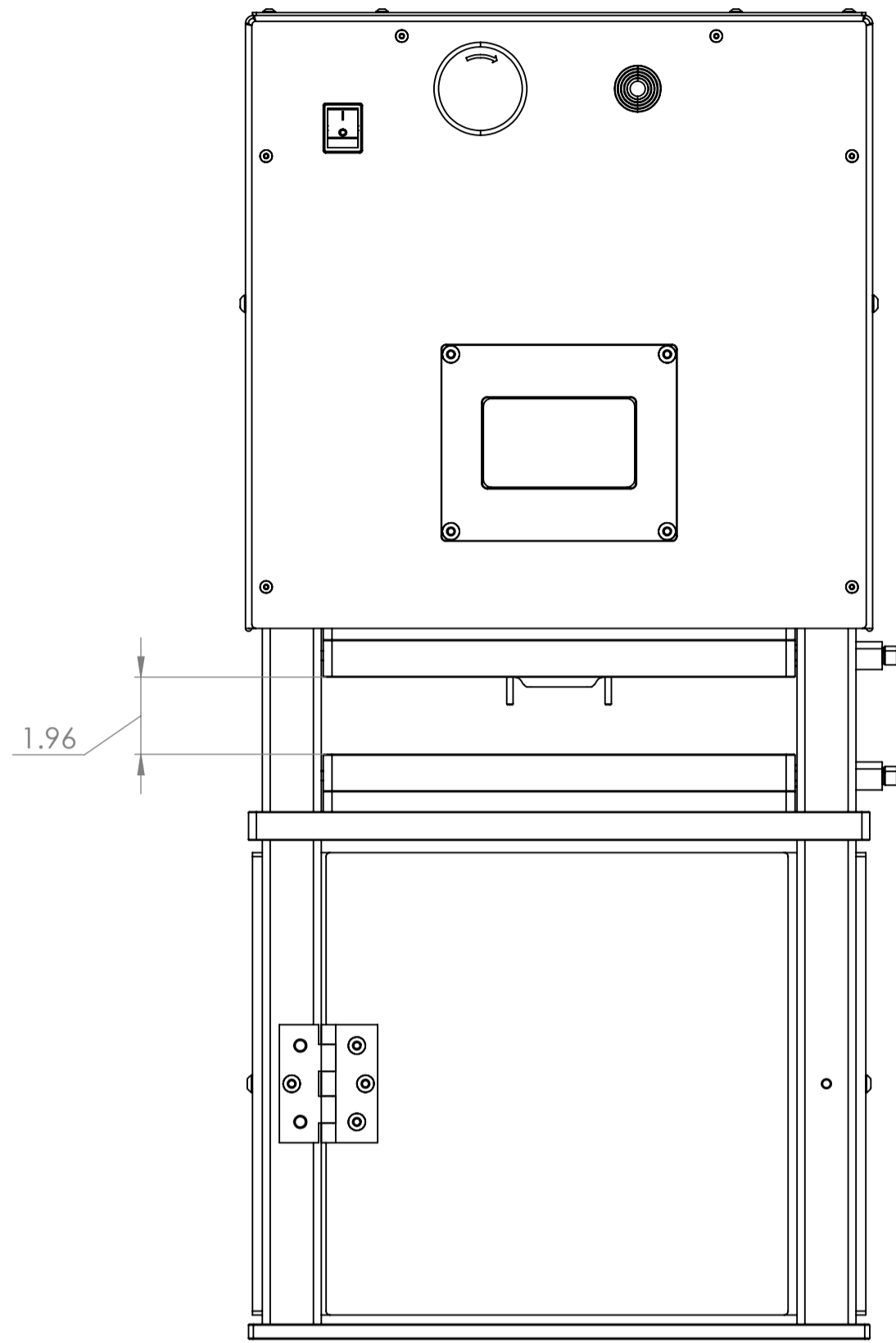


NOTES :

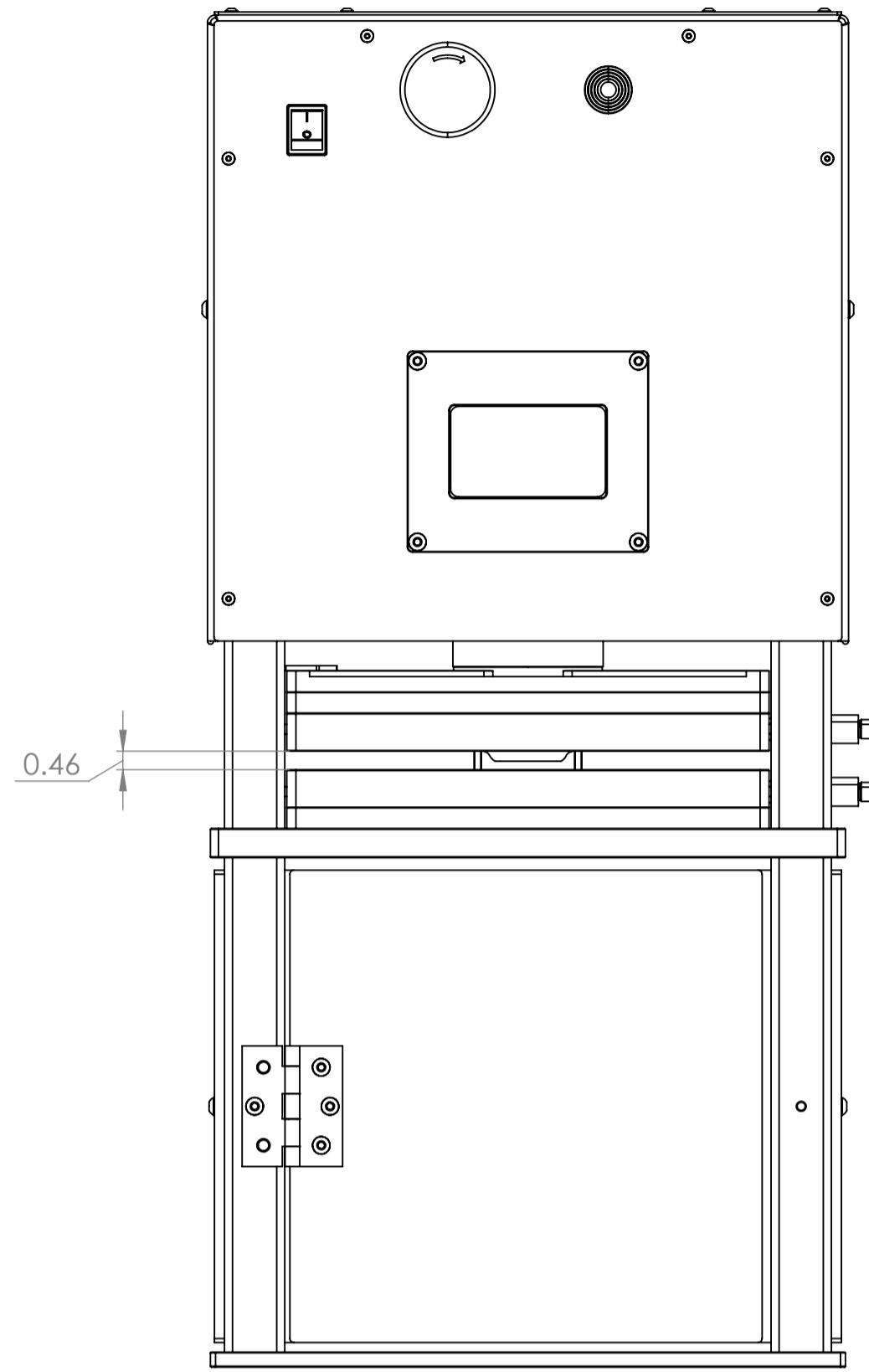
- All dimensions are in inches with tolerance +/- 0.02 inches
- All drawing views are in custom scale as mentioned.
- Check part drawings for part manufacturing tolerances
- For surface finish details, see individual part drawings.

UNLESS OTHERWISE SPECIFIED: DIMENSIONS ARE IN MILLIMETERS SURFACE FINISH: See part drawings TOLERANCES: LINEAR: +/- 0.02in ANGULAR: N/A		FINISH: Black Powder coating	DEBURR AND BREAK SHARP EDGES	CUSTOM SCALE as mentioned	REVISION
NAME	SIGNATURE	DATE			
DRAWN: SPENCER					
CHEK: SPENCER					
APPRV:					
MFG:					
G.A.					
MATERIAL:			TITLE: KWAD Press Product assembly		
WEIGHT:			DWG NO: drw_full_KWAD_press_V1.2		
SCALE: 1:5			SHEET 1 OF 3		

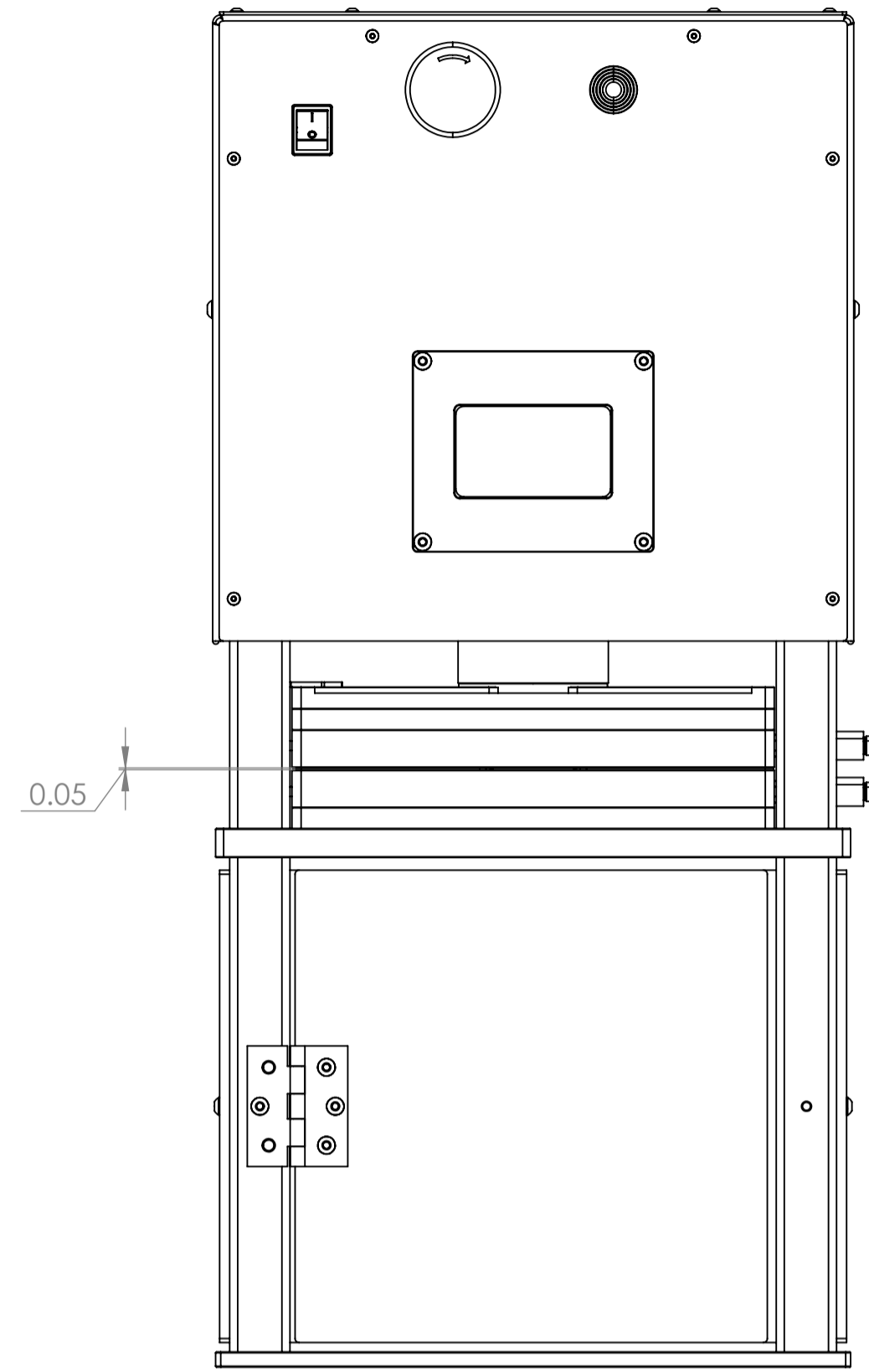
Cylinder positioning and Heatplate gap configurations:



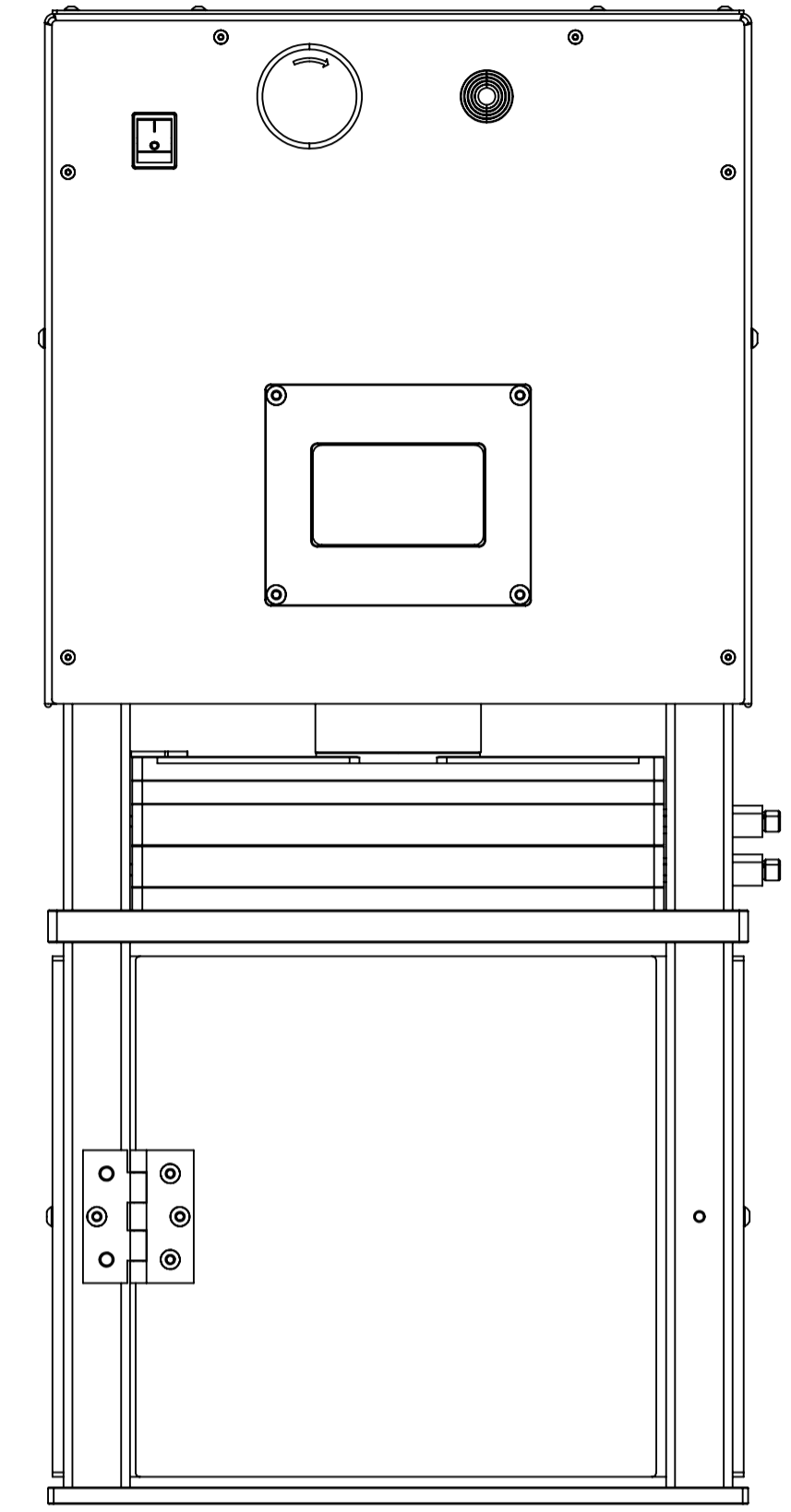
FRONT VIEW (Scale 1:4)
[Cylinder in Fully Retracted Position]



FRONT VIEW (Scale 1:4)
[Cylinder in Partail Extended Position]
[Gap height for inserting rosin bag]



FRONT VIEW (Scale 1:4)
[Cylinder in Touch Extension Position]



FRONT VIEW (Scale 1:4)
[Cylinder in Fully Extended Position]

UNLESS OTHERWISE SPECIFIED: DIMENSIONS ARE IN MILLIMETERS		FINISH:	DEBURR AND BREAK SHARP EDGES		DO NOT SCALE DRAWING	REVISION
SURFACE FINISH:						
TOLERANCES:						
LINEAR:						
ANGULAR:						
NAME	SIGNATURE	DATE			TITLE:	
DRAWN						
CHEK						
APPVD						
MFG						
Q.A.						
		MATERIAL:			DWG NO:	
					SCALE:1:5	
		WEIGHT:			SHEET 3 OF 3	